



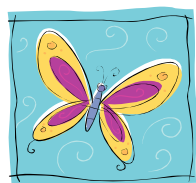
NP CONNECTION

Summer Newsletter

Please join us in welcoming our newest members...

- ◆ Sierra Scott
- ◆ Forgotten Heroes
- ◆ Grace Med Health Clinic
- ◆ Belyndae Johanningsmeier
- ◆ First Presbyterian Church
- ◆ Kansas Food Bank Warehouse, Inc.
- ◆ National Conference for Community and Justice
- ◆ Project Independence
- ◆ Desmond Blake
- ◆ Susan O. Estes
- ◆ Ron Whiting

If you would like information on joining the Nonprofit Chamber of Service, please complete and return the form on the reverse side of this newsletter. We look forward to hearing from you soon.



Garden Party at Botanica -The Wichita Gardens

In the words of songwriter Ricky Nelson, come to our garden party and “reminisce with old friends.”

On July 18 we are hosting a garden party at Botanica– The Wichita Gardens to celebrate our 100+ membership. The party will recognize the organizations that have elevated us to the centurion level and we invite all individuals interested in the nonprofit community to come and join us in this wonderful achievement of col-

laboration.

Honored guests will include Bill Buchanan, Sedgwick County Manager, Dr. Edward Flentje, Chair of the Hugo Wall School of Urban and Public Affairs at WSU, and John Kelly, Jefferson Award recipient from the San Francisco Bay Area. Underwriters for this event are Central Star Credit Union and Botanica - The Wichita Gardens.

Whether you are an executive director or employee, member of a board of

Directors for a local nonprofit, an elected official or interested community citizenship, we invite you to attend this festive occasion. Admission cost is one gift for a summer youth program at a local nonprofit. The celebration begins at 4:30 P.M. with ceremonies at 5:30 P.M.

To RSVP please contact us at (316) 978-3401 or email:Npcos@NonprofitChamberKS.org.

Program is the Key

2006 has been a tremendous year of capacity building for members of the NPCOS. Already members been updated on the most current information on employee health care, building media relationships and developing social enterprises to support ongoing programs.



Sierra Scott, individual member, and Susan Smythe of Ronald McDonald House share information at the “Building Media Relations E.D. Roundtable” in May.

Sessions include everything from building community attachment to improving organizational governance.



Visiting after the E.D. Roundtable meeting concerning employee health insurance options are Sam Muyskens, Inter-Faith Ministries, Daryl Conrade, Conrade Insurance Group Inc., Perry Schuckman, NPCOS, and Beverly White, Center for Health and Wellness.



Discussing the development of social enterprises within their organizations are Vicki Hoeltling of Wichita Lifeline, Laurel Alkire of Senior Services and Judy Weigel of Independent Living Resource Center at the June roundtable.

The response to these programs has been phenomenal and there are many wonderful workshops and other collaborative ventures in the near offing.

Of particular interest to members are the roundtable trainings noted on the back side.



P.O. Box 47012
 Wichita, KS 67201
 Phone: (316) 978—3401
 Fax: (316) 978—6530
 Email:

NPCOS@NonprofitChamberKS.org

We are on the Web!
www.NonprofitChamberKS.org

UP COMING EVENTS - 2006

July 18th - 100+ Members and Growing Strong –“A Garden Party” 4:30 P.M. to 7:30 P.M. at “Botanica – The Wichita Gardens”

July 19th - ED Roundtable – Building Community Attachment – “John Kelly – Jefferson Award Winner” 7:30 A.M. to 9:30 A.M. at the Marcus Welcome Center, Wichita State University.

September 8th – Joint Session of the Nonprofit Executives Seminar and the Nonprofit Chamber of Service 3:00 P.M. to 5:00 P.M. at Garden Room I and II, Hilton Garden Inn – Wichita

October 16th – A possible event with “Pamela Landwirth-speaker in collaboration with Friend’s University & Society of Human Resource Management.” (TBA)

November 3rd - Leadership Board University Event at the Marriot. Time – (TBA)

December 6th - Holiday Reception “Political Connections” 4:00 P.M. to 7:00 P.M. at City Arts

December 14th – Nonprofit Showcase
 Speaker: Perry Schuckman, Executive Director, Nonprofit Chamber of Service by Wichita Metro Chamber of Commerce 7:30 A.M. to 9:00 A.M. at the Airport Hilton, Executive Conference Center

January 25th—Annual Event—Luncheon at Hyatt. Time - (TBA)



And the Director says...

What an adventure my first year with the Nonprofit Chamber has been. I have witnessed a growing sense of collaboration community wide as our membership has doubled ... soon to exceed 100+ members. Volunteers have come onboard from all walks of life to structure quality activities that enhance the capacity of member agencies through programs that are scheduled for the next year (see schedule of events above.)

We have members who have recently celebrated their 25th and 50th anniversaries of service to our commu-

nity. We also have members who are just, this summer, hosting an open house of their first facilities. This is an exciting time for the nonprofit community.

Though our work is far from complete, it is time to celebrate our accumulative successes. We invite you to join us for a Garden Party on July 18 at Botanica– The Wichita Gardens starting at 4:30 P.M.

Perry L. Schuckman
 Executive Director

www.NonprofitChamberKS.org

“Please send me information on membership in the Nonprofit Chamber of Service.”

Name _____

Title _____

Organization _____

Address _____

Phone _____

E-mail _____

Fax _____

Return to:
 Nonprofit Chamber of Service
 P.O. Box 47012, Wichita, KS 67201